



**Premier  
Properties**  
Perth



## 20/10 Scott Street, Perth, PH1 5EJ Offers Over £80,000

 2  1  1  1  D

The accommodation is set over one level and comprises a welcoming entrance hall, a bright and spacious living room with feature fireplace, a modern kitchen/diner, two well-sized bedrooms, and a contemporary bathroom.

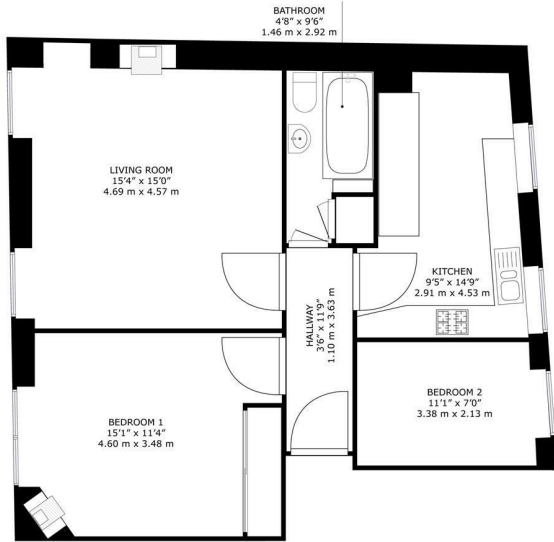
Further benefits include a useful external store, ideal for additional storage or secure bike space.

### Location – Perth City Centre

Situated in a prime central location, the property enjoys immediate access to a wide range of local amenities, including shops, restaurants, leisure facilities, and excellent transport links, making it ideal for both first-time buyers and investors alike.

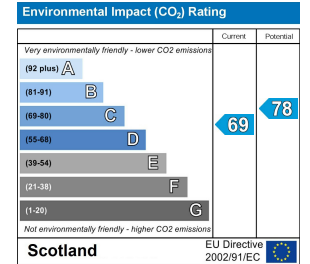
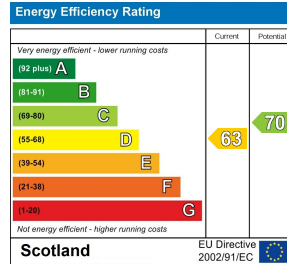
- 2 bedrooms
- Fantastic sized apartment
- Spacious reception room
- Central Perth location
- Close to local amenities
- Easy access to transport
- Stunning traditional features





20/10, Scott Street Perth, PH1 5EJ

GROSS INTERNAL AREA  
TOTAL: 658 sq. ft. 61.1 m<sup>2</sup>  
SIZES AND DIMENSIONS ARE APPROXIMATE, ACTUAL MAY VARY.



These particulars, whilst believed to be accurate are set out as a general outline only for guidance and do not constitute any part of an offer or contract. Intending purchasers should not rely on them as statements of representation of fact, but must satisfy themselves by inspection or otherwise as to their accuracy. No person in this firm's employment has the authority to make or give any representation or warranty in respect of the property.